

Building a Foundation for Health: Medical & Dental Clinic Construction Project Proposal

Project Location: Sitio Cabulihan, Culion, Palawan

Prepared by: WE Foundation

Date: February 28, 2026

Project Summary

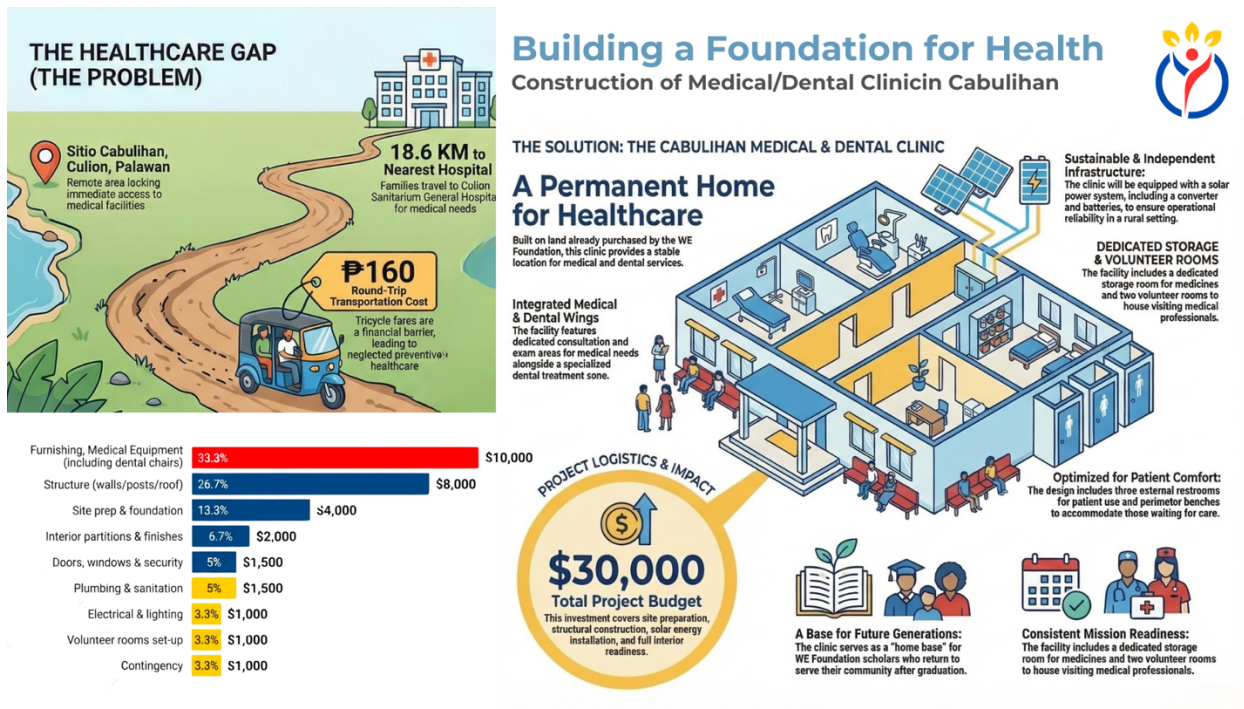
WE Foundation proposes the construction of a medical and dental clinic in Sitio Cabulihan, a remote area of Culion, Palawan. While Culion has an existing hospital—Culion Sanitarium General Hospital in the town proper (Brgy. Osmeña)—access remains a challenge for families living in outlying communities due to transportation costs and limited income opportunities.

For example, transportation from Cabulihan to the hospital typically requires a tricycle ride costing approximately ₱80 one way (₱160 round trip). For households without regular employment, this expense can delay timely care and follow-up visits.

In 2025, WE Foundation was able to purchase the land for this clinic through a major donation from long-term supporters. In 2026, the organization aims to begin construction of the clinic structure. The facility will serve as:

1. A consistent site for medical and dental missions conducted by volunteer professionals, and
2. A future “home base” for WE Foundation scholars who will return to support the community after graduation.

The estimated total cost for construction and basic readiness is approximately \$30,000, subject to refinement once local quotations are obtained.



Need and Rationale

Remote communities often face barriers to healthcare that are primarily logistical and financial. When transportation costs are high relative to household income, families may postpone non-urgent evaluation, preventive services, and dental care.

A local clinic in Cabulihan will reduce travel barriers and support more frequent, organized service delivery. It will also strengthen continuity of care by creating a consistent site for follow-ups, basic screening, and community health activities.

Project Objectives

1. **Improve access** to basic medical and dental services for residents of Cabulihan and nearby sitios.
2. **Support regular medical and dental missions** by providing an organized, secure, and consistent facility for visiting volunteer teams.
3. **Establish a long-term base** that can be utilized by future WE Foundation scholars and local health partners.
4. **Strengthen continuity of care** through a stable location for referrals, follow-up visits, and health education activities.

Proposed Facility and Infrastructure

The clinic structure will be designed as a practical and durable facility appropriate for rural conditions. The plan includes clinical service areas and two modest volunteer rooms to support visiting teams and improve mission efficiency.

Proposed areas (based on the 2D/3D plans):

- Medical consultation/exam area
- Dental treatment area
- Waiting area
- Storage area for supplies and medicines
- Basic restroom/handwashing facilities
- Two volunteer sleeping rooms

Additional considerations:

- Weather-appropriate construction and roofing
- Ventilation and basic utility readiness where feasible
- Secure storage to protect donated supplies and equipment

Implementation Plan (Phased Approach)

Phase 1: Site preparation and foundation

- Site clearing and layout marking
- Foundation work

Phase 2: Structural construction

- Posts/walls/roofing
- Doors and windows installation

Phase 3: Interior readiness and sanitation basics

- Interior partitions and basic finishes
- Handwashing and restroom readiness
- Storage installation

Phase 4: Mission readiness

- Set-up for initial medical and dental missions
 - Volunteer room readiness and basic supplies staging
-

Preliminary Budget Summary (Estimated Total: \$30,000)

This budget is a planning estimate and will be updated once contractor bids and local materials pricing are available.

Budget Item	Cost (USD)
Furnishing (dental chairs, equipment)	\$10,000
Structural build (walls/posts/roof)	\$8,000
Site prep + foundation	\$4,000
Interior partitions + basic finishes	\$2,000
Doors/windows/security	\$1,500
Plumbing/sanitation basics	\$1,500
Electrical basics / lighting	\$1,000
Volunteer rooms set-up (2 rooms)	\$1,000
Contingency	\$1,000
TOTAL	\$30,000

Current Readiness and Support

WE Foundation has already completed key preliminary steps:

- Land acquisition completed for the clinic site (through donor support)
- Volunteer medical and dental professionals identified who are willing to participate in missions
- Community coordination support in place to facilitate implementation
- Nursing scholars currently in training who are committed to serving the community and are expected to staff the clinic on a regular basis upon graduation
- Ongoing discussions with the Department of Health to explore collaboration, including potential employment opportunities for our nurse scholars to provide them with stable income while serving the community

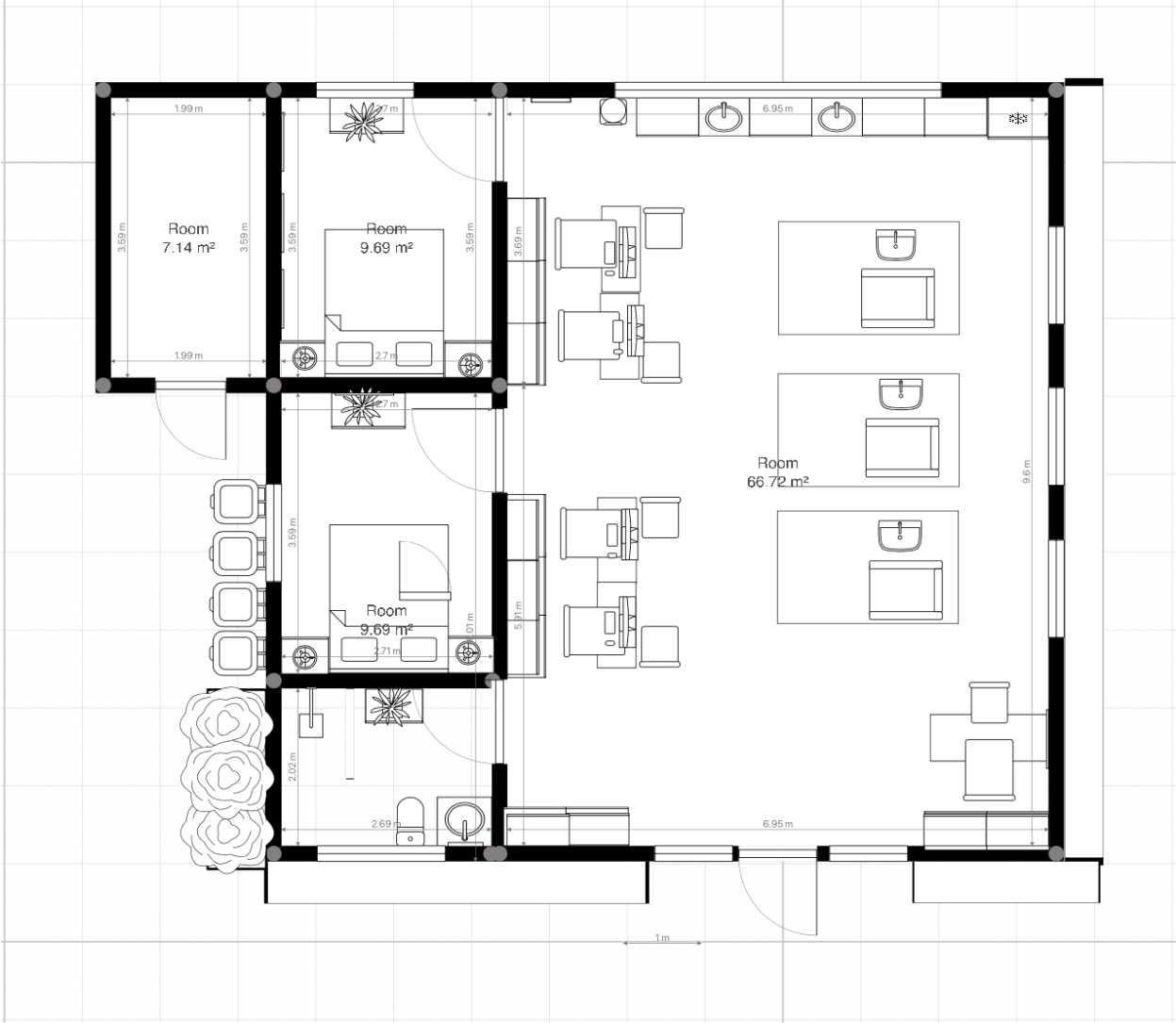
Funding Request

WE Foundation requests support to fund construction of the Cabulihan Medical & Dental Clinic. Funding will be used for site preparation, construction, basic clinic readiness, and minimal accommodations for visiting volunteer teams.

Conclusion

The proposed clinic will improve access to basic medical and dental services in Cabulihan and provide a stable site for volunteer missions and future community-based healthcare support. With donor support, WE Foundation can proceed from land acquisition to facility construction and operational readiness.

2D Plan



3D Plan

